



WORKER LINE





WORKER LINE

The WORKER line combines safety with high quality insole treatment. Designed to be used in work safety shoes, WORKER², WORKER² CALCA, WORKER² RIGIDUS and WORKER² CPX are your safe companions in your working day. Due to the anti-static properties of the surface, base materials and adhesives, they fulfil the ESD requirements and are type tested and approved according to European safety regulations with different safety shoe manufacturers' shoe models. The WORKER line's centrepiece is the orthotic shell made from the glass fiber composite material we developed and produce by ourselves in unisex widths. Due to its thermoplastic properties, it can be adapted to the foot simply and uniquely. High-quality and certified materials which meet Perpedes' high quality demands as well as the work safety requirements offer the opportunity to easily process and use the WORKER line.

WORKER² PRO



The WORKER² PRO orthotic blank forms the basis of the WORKER line and is specially designed for use in work safety shoes. The self-supporting Perpedes glass fiber composite shell with its flexible heel optimally supports the foot's longitudinal arch and maintains the natural gait pattern and walking sensation. The orthotic shell can be optionally shaped due to its thermoplastic

properties and can, therefore, be uniquely adapted to the user's foot and requirements. The combination with the WORKER² top cover, consisting of antistatic NetTex² and the ESD-conductive EVA foam, offers additional comfort and pain relief in inflexible, firm safety shoes. A soft, drop-shaped met pad made of Carbosan foam supports the transversal arch and relieves the forefoot area.

CHARACTERISTICS

Supportive foot orthotic
 Long-sole soft cushion (optional)
 Heel lift (optional)

PRODUCT FACTS

Size range: 35 - 48
 Width: Medium
 Foot orthotic shell: Acrylic composite material made of woven glass fiber and knitted polyamide (GH702)
 Outline: Square (Worker)
 3D-Contour: N = moderate longitudinal arch support with slightly guided heel
 Special feature: Perforated forefoot area (if completely glued)
 Thin, flexible in heel area

FINISHING STATUS



BESTSELLERS WORKER² PRO

ITEM NO.	BASE COVER	TOP COVER	MET PAD	WIDTH	LENGTH	SIZE RANGE	FINISHING STATUS
WPK1_	ESD EVA WORKER ²	NetTex ² Antistatic black	21388	Medium	4/4	35 - 48	completely glued
WPK2_	ESD EVA WORKER ²	NetTex ² Antistatic black, without transfer print	21388	Medium	4/4	35 - 48	completely glued
WPL1_	ESD EVA WORKER ²	NetTex ² Antistatic black	21388	Medium	4/4	35 - 48	non glued

WORKER² PRO

BASE/BOTTOM COVER

EVA ESD 30° Shore A, black

MATERIAL COMPOSITION

100% EVA + Antistaticum

CHARACTERISTICS

Antistatic

High resilience

Disinfectable and washable surface

FOOT ORTHOTIC SHELL

Acrylic composite material made of woven glass fiber and knitted polyamide (GH702)

MATERIAL COMPOSITION

Woven glass fiber / knitted polyamide with acrylic matrix

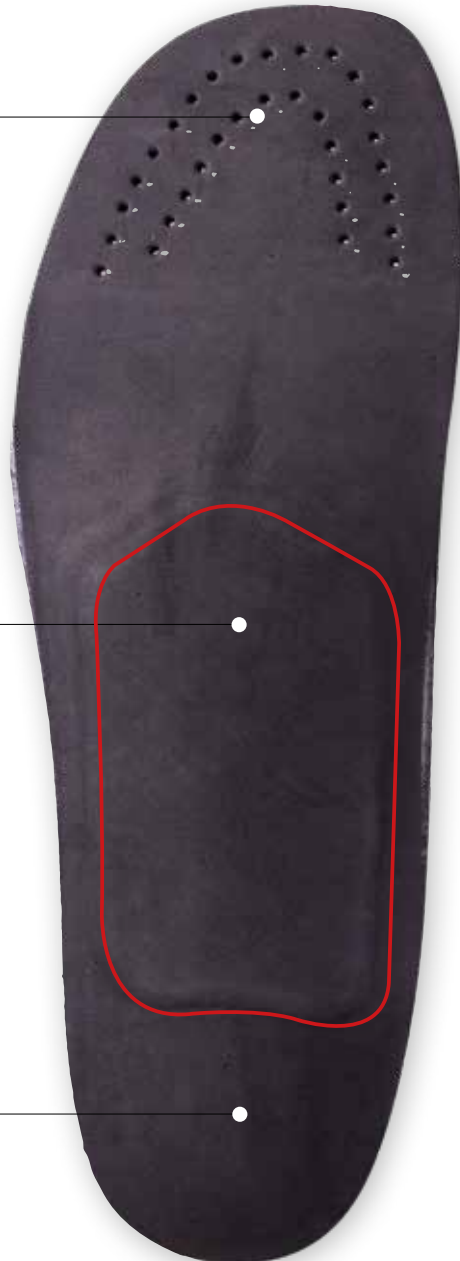
CHARACTERISTICS

Good thermalplastic processing at 130° - 140° C

Optimal support of the foot's longitudinal arch

HEEL AREA WITHOUT SHELL

Thin heel portion for a natural feeling for ground contact.





TOP COVER

NetTex² Antistatic, black

MATERIAL COMPOSITION

16% PES + 84% PUR

CHARACTERISTICS

Antistatic

Very high abrasion resistance

Antibacterial

Breathable

MET PAD

The soft, drop-shaped met pad 21388 made of Carbosan foam supports the transversal arch and relieves the forefoot area.

REINFORCING LAYER

An additional reinforcing layer provides smooth transitions and gives the orthotic blank further stability.

HEEL CUSHION PAD

Heel cushion pad made of Carbosan foam to soften impact forces.

WORKER² CALCA



The WORKER² CALCA orthotic blank is specially designed to counteract chronically painful heel area complaints, e.g. plantar fasciitis or heel spurs in work safety shoes. The particularly extensive, drop-shaped recess in the self-supporting Perpedes glass fiber composite shell is orientated on the plantar fascia's anatomical location and stretches to the foot's longitudinal arch. The moderate longitudinal arch support and the double layered PUR Slow Memory foam in the heel area have a dampening and im-

proved relieving effect. The orthotic shell can be optionally shaped due to its thermoplastic properties and can, therefore, be uniquely adapted to the user's foot and requirements. The combination with the WORKER² top cover, consisting of antistatic NetTex² and the ESD-conductive EVA foam, offers additional comfort and pain relief in firm work safety shoes. A soft, drop-shaped met pad made of Carbosan foam supports the transversal arch and relieves the forefoot area.

CHARACTERISTICS

Supportive foot orthotic
 Calcaneal spur recess and cushion
 Long-sole soft cushion (optional)
 Heel lift (optional)

PRODUCT FACTS

Size range: 35 - 48
 Width: Medium
 Foot orthotic shell: Acrylic composite material made of woven glass fiber and knitted polyamide (GH702)
 Outline: Square (Worker)
 3D-Contour: R = higher longitudinal arch support with guided heel
 Special feature: Perforated forefoot area (if completely glued)
 Anatomically correct recess for plantar fasciitis / heel spur

FINISHING STATUS



BESTSELLERS WORKER² CALCA

ITEM NO.	BASE COVER	TOP COVER	MET PAD	WIDTH	LENGTH	SIZE RANGE	FINISHING STATUS
WCK1_	ESD EVA WORKER ²	NetTex ² Antistatic black	21388	Medium	4/4	35 - 48	completely glued
WCK2_	ESD EVA WORKER ²	NetTex ² Antistatic black, without transfer print	21388	Medium	4/4	35 - 48	completely glued
WCL1_	ESD EVA WORKER ²	NetTex ² Antistatic black	21388	Medium	4/4	35 - 48	non glued

WORKER² CALCA

BASE/BOTTOM COVER

EVA ESD 30° Shore A, black

MATERIAL COMPOSITION

100% EVA + Antistaticum

CHARACTERISTICS

Antistatic

High resilience

Disinfectable and washable surface

FOOT ORTHOTIC SHELL

Acrylic composite material made of woven glass fiber and knitted polyamide (GH702))

MATERIAL COMPOSITION

Woven glass fiber / knitted polyamide with acrylic matrix

CHARACTERISTICS

Good thermalplastic processing at 130° - 140° C

Optimal support of the foot's longitudinal arch

HEEL RECESS

The particularly extensive, drop-shaped heel recess provides the space for a shock absorbing heel pad and distributes the body load from the central Calcaneus to the lateral, usually pain-free areas of the heel.





TOP COVER

NetTex² Antistatic, black

MATERIAL COMPOSITION

16% PES + 84% PUR

CHARACTERISTICS

Antistatic

Very high abrasion resistance

Antibacterial

Breathable

MET PAD

The soft, drop-shaped met pad 21388 made of Carbosan foam supports the transversal arch and relieves the forefoot area.

REINFORCING LAYER

An additional reinforcing layer provides smooth transitions and gives the orthotic blank further stability.

HINDFOOT CUSHION

The open celled, 3mm red PUR Slow Memory foam in the heel area with its 12° Shore A is used double layered in the shell's recess. This softness has a dampening and pain relieving effect, as it absorbs impact forces.

WORKER LINE

» THE WORKER LINE COMBINES
SAFETY WITH HIGH QUALITY
FOOT ORTHOTIC TREATMENT. «



WORKER² CPX



The WORKER² CPX orthotic blank is based on our successful CALCA PRO X and is particularly designed for acutely painful complaints due to overloading in the heel area, e.g. plantar fasciitis or Calcaneal spurs in work safety shoes. The shell's heel recess in combination with the uniquely low positioning of the plantar fascia in the self-supporting Perpedes glass fiber composite shell is orientated on the fascia's anatomical location and stretches well within the foot's longitudinal arch. The moderate arch support and the double layered PUR Shock Absorber X combined with

the incorporated PUR Slow Memory cushioning material optimally reduce impact forces. The orthotic shell can be optionally shaped due to its thermoplastic properties and can, therefore, be uniquely adapted to the user's foot and requirements. The combination with the WORKER² top cover, consisting of antistatic NetTex² and the ESD-conductive EVA foam, offers additional comfort and pain relief in firm work safety shoes. A soft, drop-shaped met pad made of Carbosan foam supports the transversal arch and relieves the forefoot area.

CHARACTERISTICS

Supportive foot orthotic
 Calcaneal spur recess and cushion
 Long-sole soft cushion (optional)
 Heel lift (optional)

PRODUCT FACTS

Size range: 35 - 48
 Width: Medium
 Foot orthotic shell: Acrylic composite material made of woven glass fiber and knitted polyamide (GH702)
 Outline: Square (Worker)
 3D-Contour: PX = moderate longitudinal arch support with plantar fascia groove in the shell
 Special feature: Perforated forefoot area (if completely glued)
 Anatomically correct recess for plantar fasciitis / heel spur with plantar fascia groove for maximum relief

FINISHING STATUS



BESTSELLERS WORKER² CPX

ITEM NO.	BASE COVER	TOP COVER	MET PAD	WIDTH	LENGTH	SIZE RANGE	FINISHING STATUS
WXK1_	ESD EVA WORKER ²	NetTex ² Antistatic black	21388	Medium	4/4	35 - 48	completely glued
WXK2_	ESD EVA WORKER ²	NetTex ² Antistatic black, without transfer print	21388	Medium	4/4	35 - 48	completely glued
WXL1_	ESD EVA WORKER ²	NetTex ² Antistatic black	21388	Medium	4/4	35 - 48	non glued

WORKER² CPX

BASE/BOTTOM COVER

EVA ESD 30° Shore A, black

MATERIAL COMPOSITION

100% EVA + Antistaticum

CHARACTERISTICS

Antistatic

High resilience

Disinfectable and washable surface

FOOT ORTHOTIC SHELL

Acrylic composite material made of woven glass fiber and knitted polyamide (GH702)

MATERIAL COMPOSITION

Woven glass fiber / knitted polyamide with acrylic matrix

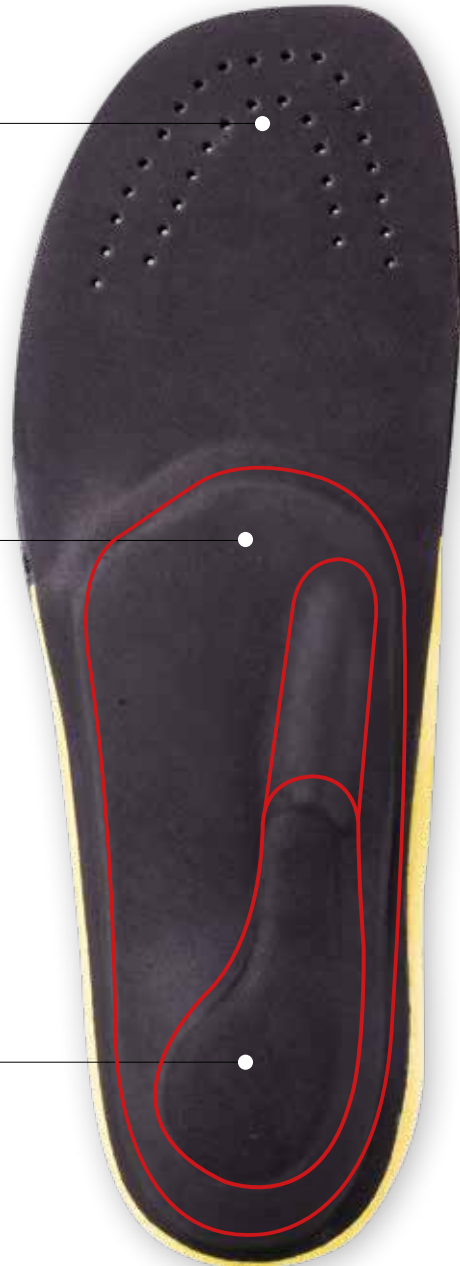
CHARACTERISTICS

Good thermalplastic processing at 130° - 140° C

Optimal support of the foot's longitudinal arch

HEEL RECESS WITH FASCIA GROOVE

The shell's anatomically correct heel recess in combination with the low positioning of the fascia runs well within the foot's longitudinal arch. The heel recess provides the space for a shock absorbing heel pad and distributes the body load from the central Calcaneus to the lateral, usually pain-free areas of the heel.





TOP COVER

NetTex² Antistatic, black

MATERIAL COMPOSITION

16% PES + 84% PUR

CHARACTERISTICS

Antistatic

Very high abrasion resistance

Antibacterial

Breathable

REINFORCING LAYER

An additional reinforcing layer provides smooth transitions and gives the orthotic blank further stability.

MET PAD

The soft, drop-shaped met pad 21388 made of Carbosan foam supports the transversal arch and relieves the forefoot area.

HINDFOOT CUSHION

The open celled, 3mm yellow Shock Absorber X PUR foam in the heel area with its 7° Shore A is double layered in the shell's recess. This softness has a dampening and pain relieving effect, as it effectively absorbs impact forces.

WORKER² RIGIDUS



The WORKER² RIGIDUS orthotic blank is designed specially for use with complaints in the big toe area, e.g. in the case of Hallux limitus in work safety shoes. The self-supporting Perpedes glass fiber composite shell with its short wing section dynamically supports the foot's longitudinal arch and is extended under the MTP joint 1 in such a way, that the joint is spared from painful movement-related deflections whilst walking. The orthotic shell

can be optionally shaped due to its thermoplastic properties and can, therefore, be uniquely adapted to the user's foot and requirements. The combination with the WORKER² top cover, consisting of antistatic NetTex² and the ESD-conductive EVA foam, offers additional comfort and pain relief in firm work safety shoes. A soft, drop-shaped met pad made of Carbosan foam supports the transversal arch and relieves the forefoot area.

CHARACTERISTICS

Supportive foot orthotic
 Rigidus splint
 Long-sole soft cushion (optional)
 Heel lift (optional)

PRODUCT FACTS

Size range: 35 - 48
 Width: Medium
 Foot orthotic shell: Acrylic composite material made of knitted glass fiber (G431)
 Outline: Square (Worker)
 3D-Contour: N = moderate longitudinal arch support with slightly guided heel
 Special feature: Perforated forefoot area (if completely glued)
 Shell recess in heel area in combination with rigidus splint

FINISHING STATUS

BESTSELLERS WORKER² RIGIDUS

ITEM NO.	BASE COVER	TOP COVER	MET PAD	WIDTH	LENGTH	SIZE RANGE	FINISHING STATUS
WRK1_	ESD EVA WORKER ²	NetTex ² Antistatic black	21388	Medium	4/4	35 - 48	completely glued
WRK2_	ESD EVA WORKER ²	NetTex ² Antistatic black, without transfer print	21388	Medium	4/4	35 - 48	completely glued
WRL1_	ESD EVA WORKER ²	NetTex ² Antistatic black	21388	Medium	4/4	35 - 48	non glued

WORKER² RIGIDUS

BASE/BOTTOM COVER

EVA ESD 30° Shore A, black

MATERIAL COMPOSITION

100% EVA + Antistaticum

CHARACTERISTICS

Antistatic

High resilience

Disinfectable and washable surface

RIGIDUS SPLINT

Rigidus splint for motion-limiting reinforcement underneath the MTP-joint I.

FOOT ORTHOTIC SHELL

Acrylic composite material made of woven glass fiber and knitted polyamide (GH702)

MATERIAL COMPOSITION

Woven glass fiber / knitted polyamide with acrylic matrix

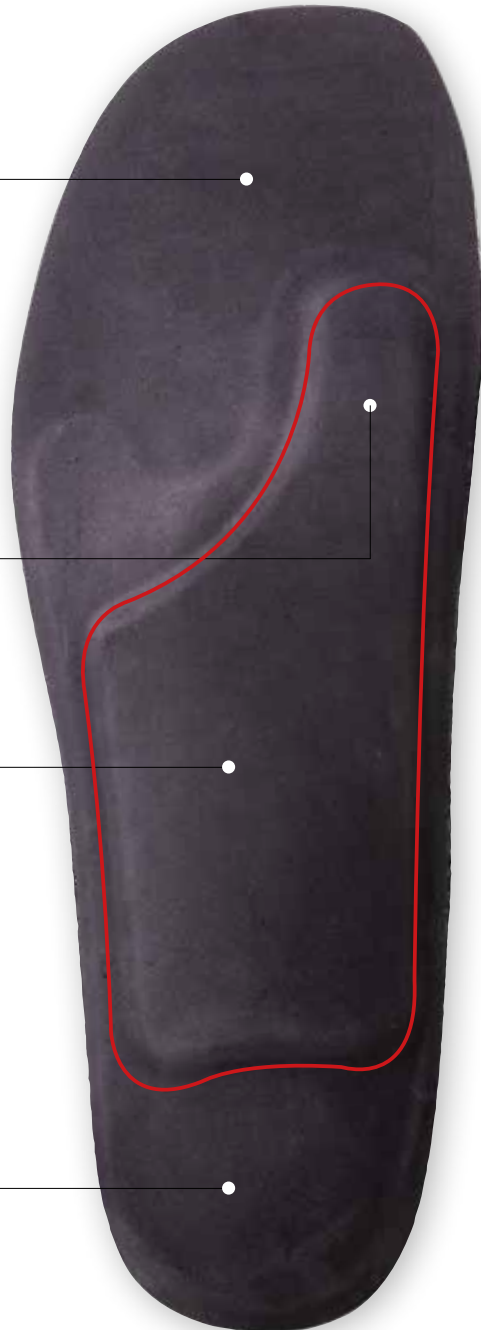
CHARACTERISTICS

Good thermalplastic processing at 130° - 140° C

Optimal support of the foot's longitudinal arch

HEEL AREA WITHOUT SHELL

Thin heel portion for a natural feeling for ground contact.





TOP COVER

NetTex² Antistatic, black

MATERIAL COMPOSITION

16% PES + 84% PUR

CHARACTERISTICS

Antistatic
Very high abrasion resistance
Antibacterial
Breathable

MET PAD

The soft, drop-shaped met pad 21388 made of Carbosan foam supports the transversal arch and relieves the forefoot area.

REINFORCING LAYER

An additional reinforcing layer provides smooth transitions and gives the orthotic blank further stability.

HEEL CUSHION PAD

Heel cushion pad made of Carbosan foam to soften impact forces.

WORKER² PRE-CUT WEDGE

COMPENSATION FOR LEG LENGTH DISCREPANCIES

For compensating of leg length differences of a max. 10 mm or for bilateral heel elevation of up to 10 mm (Fig. 1). The compensation lift must be carried out proximally to the MTP-joints and may not exceed the original height of the WORKER² prefabricated foot orthoses in the steel toecap area of the safety footwear (Fig. 2)!



Abb. 1



Abb. 2

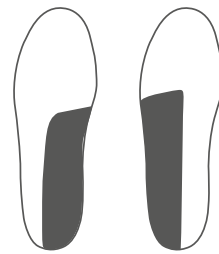


Abb. 3

Abb. 4

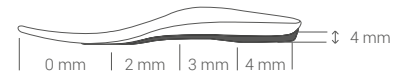


Abb. 5

SUPINATION OR PRONATION WEDGE

To modify the WORKER² prefabricated foot orthotics, you can apply and alter the appropriate conductive EVA wedge (optionally available), respecting a maximum height of 4 mm in the heel area, beginning from the lateral or medial heel edge to proximally of the MTP-joints, shaped in a wedge and thinned to 0mm at the center line of the insole (Fig. 3-5). The original height of the WORKER² foot orthotics may not be exceeded in the steel toecap area of the safety footwear!

ITEM NO.	DESCRIPTION	SIZE RANGE
WOK61	ESD EVA WORKER ² , PRE-CUT WEDGE, 6 mm	1 (suitable for WORKER ² sizes 35 - 39)
WOK62	ESD EVA WORKER ² , PRE-CUT WEDGE, 6 mm	2 (suitable for WORKER ² sizes 40 - 44)
WOK63	ESD EVA WORKER ² , PRE-CUT WEDGE, 6 mm	3 (suitable for WORKER ² sizes 45 - 48)
WOK101	ESD EVA WORKER ² , PRE-CUT WEDGE, 10 mm (not for CALCA and CPX)	1 (suitable for WORKER ² sizes 35 - 39)
WOK102	ESD EVA WORKER ² , PRE-CUT WEDGE, 10 mm (not for CALCA and CPX)	2 (suitable for WORKER ² sizes 40 - 44)
WOK103	ESD EVA WORKER ² , PRE-CUT WEDGE, 10 mm (not for CALCA and CPX)	3 (suitable for WORKER ² sizes 45 - 48)

OVERVIEW

	WORKER ² PRO	WORKER ² CALCA	WORKER CPX	WORKER RIGIDUS
Foot orthotic shell made of composite glass fiber material	GH702	GH702	GH702	GH702
Base/Bottom cover EVA ESD black	✓	✓	✓	✓
Top cover NetTex ² Antistat black	✓	✓	✓	✓
Rigidus splint for motion-limiting				✓
Hindfoot cushion		3 mm PUR Slow Memory, red, 12° Sh.A	3 mm Shock Absorber X, yellow, 7° Sh.A	
Metatarsal pad	21388	21388	21388	21388
Heel cushion pad	✓			✓
Thin and flexible heel area	✓			✓
Heel recess with cushioning		✓	✓	
Orthotic shell customizable by temperature of approx. 140°C	✓	✓	✓	✓



WWW.PERPEDES.COM

Order and Support:

Mo. - Th: 8.00 am - 5.30 pm

Fr. 8.00 am - 4.00 pm

T. +49 (0) 7021 738 30 - 0

F. +49 (0) 7021 738 30 - 298

info@perpedes.de

Return address:

Perpedes GmbH

Tannenbergstr. 139

73230 Kirchheim unter Teck

Germany

Perpedes GmbH

Haertwasen 8-14

73252 Lenningen

Germany